

- Control Valves
- Chambers
- Level Controllers
- Regulators
- Level Switches
- Relief Valves

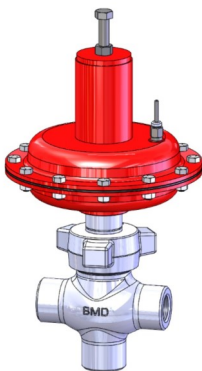
Presented By:

## Control Valves

### CV10

The CV10 is a close-coupled control valve suited for pressure control, level control and flow control on separators, scrubbers, wellheads and other production equipment. The hammer union allows the topworks to be removed without taking the valve out of line for easy repair and trim replacement. The cage-guided design improves seat alignment and longevity.

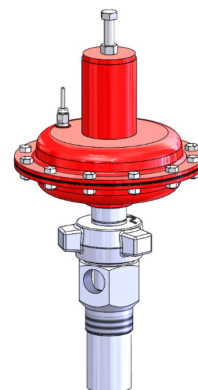
- Globe, tee and angle bodies.
- 1" and 2" female NPT, flanged, butt weld and socket weld connections.
- Direct/Reserve No. 35 and No. 70 actuators.
- Quick open and throttling (0.25"-1.00") trim in SST and tungsten carbide.
- 4,000 psi pressure rating.
- -50°F to 200°F temperature range (-46°C to 93°C).
- NACE and low-temp options available.



### CV20

The CV20 is a rugged, compact, freezeless dump valve. The angle body can be installed so that the valve cage and plug are submerged into the process media giving the valve its freezeless characteristic. Typical installations include separators, scrubbers, and other production vessels. Utilizes the same trim set as the CV10, offering more versatility with multiple trim sizes and material options.

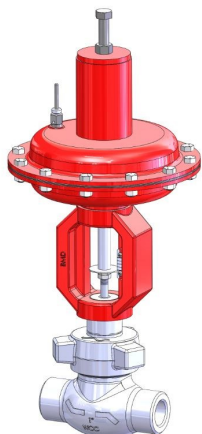
- 1" FNPT X 1" FNPT, 2" MNPT X 1" FNPT connections.
- Direct/Reserve No. 35 and No. 70 actuators.
- Quick open and throttling (0.25"-0.50") trim in SST and tungsten carbide.
- 1500 psi pressure rating.
- -50°F to 200°F temperature range (-46°C to 93°C).
- NACE and low-temp options available.



### CV15

The CV15 is an open yoke control valve suited for pressure control, level control and flow control on separators, scrubbers, wellheads and other production equipment. The open yoke allows mounting positioners, limit switches and other external devices. The exposed stem provides accurate travel indication and higher-temperature service.

- Globe, tee and angle bodies.
- 1" and 2" female NPT, flanged, butt weld and socket weld connections.
- Direct/Reserve No. 35 and No. 70 actuators.
- Quick open and throttling (0.25"-1.00") trim in SST and tungsten carbide.
- 4,000 psi pressure rating.
- -50°F to 200°F temperature range (-46°C to 93°C).
- NACE and low-temp options available.



### CV25

The CV25 is a compact, economical dump valve solution. It consists of a freezeless angle body design coupled with a low profile actuator. The plug and seat are both submerged in the process media to give the valve its freezeless characteristic. Typical installations include separators, compressor skids, and other production equipment. The CV25 is available with a metal to metal or soft seat option.

- 1" MNPT X 1" FNPT, 2" MNPT X 1" FNPT or 1" MNPT X 1/2" FNPT connections.
- Reverse No. 35 actuator.
- Quick open (.375"-0.50") trim in 304 SST or Kynar.
- 2200 psi pressure rating.
- -50°F to 200°F temperature range (-46°C to 93°C).
- NACE and low-temp options available.

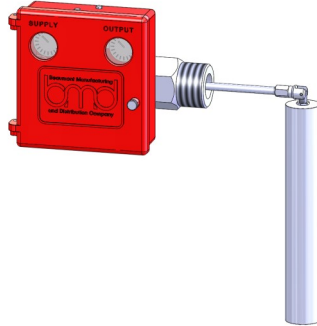


# Liquid Level Controllers

## LC10

The LC10 is a rugged, field configurable, displacer-operated, liquid level controller. Ideal applications include scrubbers, separators, and heater treaters. Industry-proven force balance design allows for control of gas/liquid as well as liquid/liquid interfaces. Wide variety of sizes, end connections, displacer arm lengths to fit any vessel configuration. Snap pilot available with soft seat option that meets 40 CFR Part 60, Subpart 0000.

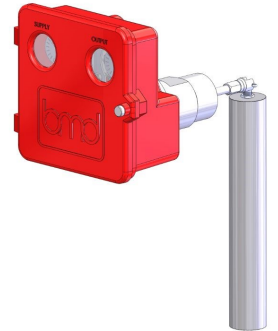
- Threaded (6000 psi), flanged (up to ANSI 2500) and union connections (1500 psi).
- LH or RH mount.
- Direct or Reserve action.
- Snap, throttle or zero bleed snap pilot options.
- SPDT or DPDT electric switch options.
- -50°F to 400°F temperature rating (-46°C to 204°C).
- NACE and low-temp options available.



## LC10B

The LC10B offers all of the features/options of the LC10S sealed case but with a back-mount connection.

- Door gasket and manifold style pilot.
- Threaded (6000 psi), flanged (up to ANSI 2500) and union connections (1500 psi).
- Direct or Reserve action.
- Snap, throttle or zero bleed snap pilot options.
- SPDT or DPDT electric switch options.
- NACE and low-temp options

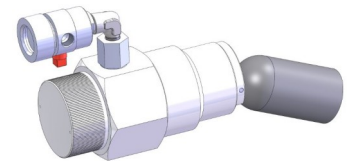


## Liquid Level Switches

### LC20P

The LC20P is a pneumatic high-pressure, float operated, normally open or normally closed, liquid level switch. The high or low lever switch can be installed directly into a vessel or used with an external float chamber. Can also be used as a dump valve operator with a 3-way block and bleed pilot option.

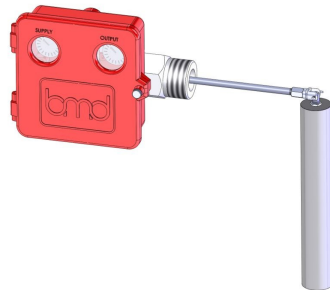
- 2" NPT Carbon Steel or 316 SST Body.
- Polystyrene or SST floats.
- 1,500 to 2,000 psi pressure rating.
- -50°F to 300°F (-46°C to 149°C).
- NACE and low-temp options available.
- Float extensions available.



### LC10S

The LC10S includes all of the features/options of the LC10 with the addition of a sealed case/cover to protect internals and further prevent emissions.

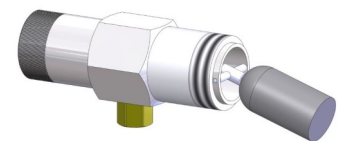
- Door gasket.
- Manifold-style pilot.
- Threaded (6000 psi), flanged (up to ANSI 2500) and union connections (1500 psi).
- LH or RH mount.
- Direct or Reserve action.
- Snap, throttle or zero bleed snap pilot options.
- SPDT or DPDT electric switch options.
- -50°F to 400°F temperature rating (-46°C to 204°C).
- NACE and low-temp options available.



### LC20E

The LC20E is an electric high-pressure, float operated, liquid level switch certified for Class I, Div 1, Group C and D Service. The high or low lever switch can be installed directly into a vessel or used with an external float chamber.

- 2" NPT Carbon Steel or 316 SST Body.
- Polystyrene or SST floats.
- 1,500 to 2,000 psi pressure rating.
- -40°F to 300°F (-40°C to 149°C).
- SPDT or DPDT switch.
- NACE and low-temp options available.
- Float extensions available.

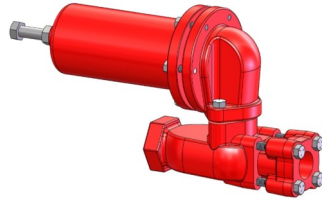


# Regulators

## RG10

The RG10 is a high pressure, direct spring operated, pressure regulator. Its high pressure, heavy duty design makes it ideal for pressure regulation in the oil and natural gas industry. Typical applications include farm taps, first or second cut regulation, transmission to distribution and many other high pressure processes.

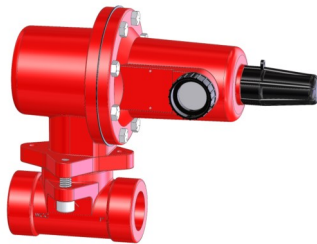
- 1" and 2" WCB steel bodies.
- Female NPT and Flanged Connections.
- 1500 psi max inlet, 27-500 psi outlet
- -20°F to 150°F temperature range (-29°C to 66°C).
- Orifice sizes from .125" to 0.50" in both brass and SST.
- Buna, Viton® and Nylon disks.
- Neoprene and Viton® Diaphragms.
- NACE option available.



## RG20

The RG20 is a direct spring operated, pressure regulator that can be used anywhere pressure regulation of natural gas, air or other gas is required. Its housing can be moved to one of four positions. The body is accessible without removing it from the line for easy maintenance.

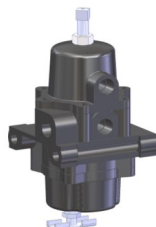
- 1" and 2" WCB steel bodies.
- 2000 psi pressure rating.
- Female NPT connections.
- -20°F to 150°F temperature range (-29°C to 66°C).
- Orifice sizes from .125" to 0.50" in aluminum and SST.
- Buna, Viton® and nylon disks.
- Buna and Viton® diaphragms.
- NACE option available.



## RG30

The RG30 is a compact, spring-operated regulator used to supply air or gas to pilots, positioners or other pneumatic controls. It features an internal relief to help maintain an accurate downstream pressure, rugged aluminum housing construction with dual outlets and a built-in micron filter.

- 1/4" NPT Connection.
- 250 psi inlet pressure rating.
- Outlet ranges: 0-30 psi, 0-60 psi and 0-120 psi.
- -20°F to 180°F temperature range (-29°C to 82°C).



## RG40

The RG40 is a compact, high pressure, spring operated regulator designed to reduce high pressures down to working pressures. It features a rugged brass body and housing with a durable metal diaphragm and nylon disk for handling high pressure drops. Typical applications include reduction of high pressure to operate chemical injection pumps, valve actuators or controllers.

- 1/4" NPT Connection (1 inlet, 3 outlets).
- 5000 psi inlet pressure rating.
- Outlet ranges: 0-125 psi, 0-225 psi.
- -20°F to 180°F temperature range (-29°C to 82°C).
- SST diaphragm and nylon disk.
- Optional tee handle adjustment.

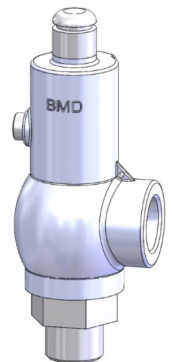


## Relief Valves

### RV10

The RV10 safety relief valves are well-suited for overpressure protection of production equipment. Non-rising stem and soft-seat design ensure long lasting set pressure repeatability and bubble-tight shutoff. ASME certified for gas service. Manufactured in accordance with the ASME BPVC, capacity tested and certified by the National Board and meet the requirements of Section VIII, Div. 1 of the ASME Code.

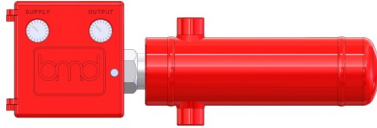
- NPT and flanged connections.
- Wide variety of inlet/outlet combinations.
- 15-3000 psi set pressure range.
- 304/316 trim with D to M orifice sizes.
- Viton®, carbon-filled PTFE, PEEK and HNBR seat options.
- -50°F to 400°F temperature range (-46°C to 204°C).
- NACE and low-temp options available.



# Chambers and Domes

## CH10

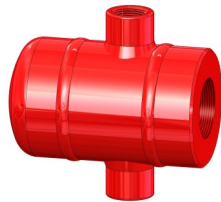
BMD's CH10 horizontal chamber is designed to be used with the LC10 liquid level controller, but may also be used with other types of level switches and controllers. Chambers offer the benefit of isolating the process fluid from the turbulence of the main vessel making for a more accurate level measurement. They are also an excellent choice for situations where the main vessel internal geometry may block the direct installation of a level controller.



- 2" NPT controller connection.
- 1" NPT process connection.
- 2000 psi pressure rating.
- Carbon steel or SST option.

## CH20

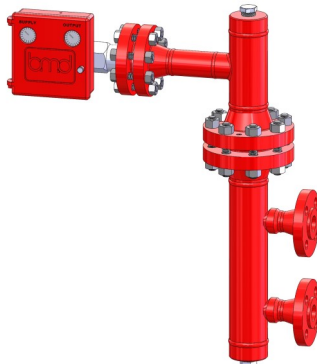
BMD's CH20 horizontal chamber, a shorter version of the CH10, is designed to be used with the LC20 liquid level switches, but may also be used with other types of level switches and controllers. The CH20 is also an excellent choice for situations where the main vessel internal geometry may block the direct installation of a level controller.



- 2" NPT controller connection.
- 1" NPT process connection.
- 2000 psi pressure rating.
- Carbon steel or SST option.

## CH30

BMD's CH30 full line of vertical chambers are designed to be used with the LC10 liquid level controller, but may also be used with other types of level controllers. The CH30s are fully customizable to meet many process piping sizes and connections. The upper dome portion can also be ordered separately for top entry into a vessel.



- 3" and 4" Chambers.
- 2" NPT or flanged controller connections.
- 1", 1 1/2", 2" NPT and flanged process connections.
- Flanged pressure rating up to 1500 class.
- Threaded pressure rating 600 class.
- Carbon steel or SST options.

Beaumont Manufacturing  
**bmd**  
and Distribution Company  
[www.beaumontmanufacturing.com](http://www.beaumontmanufacturing.com)

Phone: 409-225-5863

Fax: 409-242-1005

1009 Laurel Street

Beaumont, Texas 77701